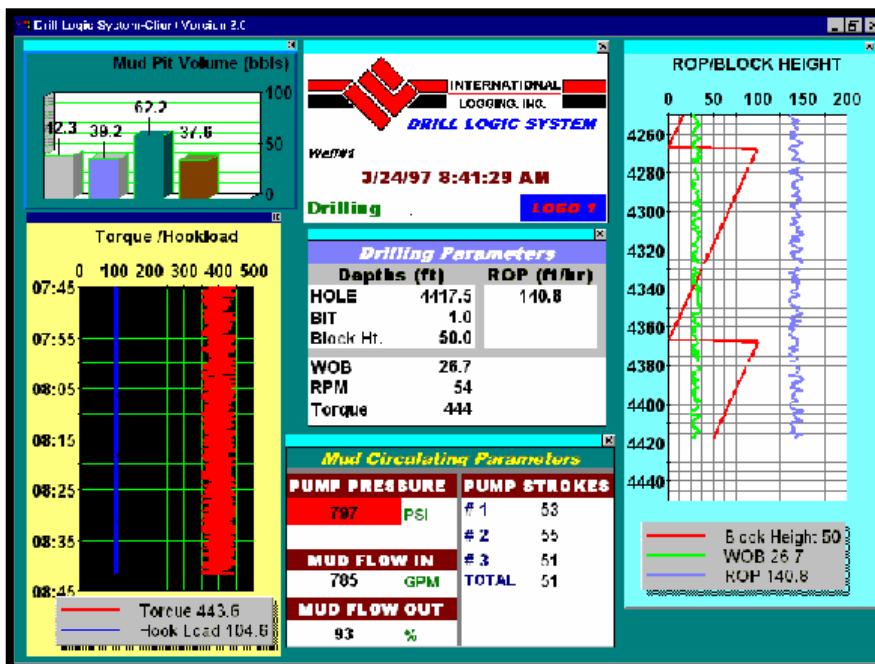


Drill Logic System - Client (Real-Time Graphics Display)

OVERVIEW

The Drill Logic System - Client (DLS-Client) software provides real-time alpha-numeric and graphical displays of data on networked PC workstations. This allows networked users to view real-time data across the rig-site or across the world!

DLS-Client connects to the DLS computer in the logging unit via a Local or Wide Area Network (LAN or WAN) using the TCP/IP network protocol. If your office currently has a TCP/IP network connection to the rig-site, it's a simple matter to add a workstation for DLS-Client. Typically DLS-Client workstation are found in the Drilling Supervisors and well-site geologists office at the rig-site as well as one in the company office in town.



DLS Client screen shot illustrating some of the many formatting options available

Features:

- Data received from DLS Server over existing TCP/IP networks
- Multiple DLS Clients may be installed any on the network both on and off the well site
- Requires minimal bandwidth of approximately 700 bytes every 2 seconds (2800 bps)
- Unlimited combinations of user configurable graphical and alpha numeric displays
- Audio and visual user configured alarms
- Display and playback over 100 parameters including current rig operation
- Runs on any Pentium computer with Windows 95/98/2000/NT/XP
- Reliable multitasking, no need to close DLS Client while performing other tasks



Drill Logic System - Client (Real-Time Graphics Display)

NETWORK LAYOUT

DLS Client may be installed on any computer on the LAN or WAN that is able to connect to the DLS Server computer in the logging unit. Normally DLS Client will utilize the telecommunication equipment and network that is installed at the rig-site and company offices. Any number of computers on the network may have DLS Client installed to receive real-time and historical data.

